

ALLTEMP

COMPRESSOR CATALOGUE



embraco POWER IN.
CHANGE ON.

www.alltemp.ca

L/M/HBP

(Low/Medium/High Back Pressure)
Evaporating temperatures between -31°F and 59°F

Applications:
Ice makers, etc.

L/MBP

(Low/Medium Back Pressure)
Evaporating temperatures between -31°F and 23°F

Applications:
Commercial display counters, and drinking fountains

LBP

(Low Back Pressure)
Evaporating temperatures between -31°F and 14°F

Applications:
Refrigerators, frozen food cabinets, frozen food display cases, display windows, etc.

MPB

(Medium Back Pressure)
Evaporating temperatures between 14°F and 32°F

Applications:
Fresh food cabinets, drink coolers, ice makers, walk-in coolers and freezers.

HBP

(High Back Pressure)
Evaporating temperatures between 32°F and 59°F

Applications:
Fresh food cabinets, icemakers, dehumidifiers, dryers, etc.

Electrical Motor Starting Torque

Description	
LST (LOW)	Low Starting Torque: LBP-MBP-HBP-AC applications with RSIR-RSCR-PSC electric motors. Execution suitable for systems with a capillary tube and with balanced pressures at start up.
HST (HIGH)	High Start Torque: LBP-MBP-HBP applications with CSIR-CSR electric motors. Execution suitable for systems with expansion valve or capillary tube, with unbalanced pressures at start up.

Electrical Motor Types

Description	
RSIR	Resistive Start - Inductive Run: No start capacitor; no run capacitor
RSCR	Resistive Start - Capacitive Run: No start capacitor; run capacitor is needed to improve the efficiency
CSIR	Capacitive Start - Inductive Run: No run capacitor; start capacitor is needed to improve the torque
CSCR	Capacitive Start - Capacitive Run: CSCR version with capacitive run and start windings
PSC	Permanent Split Capacitor: No starting device. Run capacitor is directly connected to the winding.

R12 Compressors

Performance Specifications										Electrical Specifications											
					Capacity BTU/H - ASHRAE			Replacement Guide												Diagrams	
Part #	Old Part #	Nominal HP	Volts	Application	L/MBP	HBP32	HBP46	Tecumseh	Copeland	Part #	Start Torque	Motor Type	LRA	Relay	Overload	Capacitor	Physical	Wiring			
30-EMI30ER1	EM30SC, EMI30ER, EM30	1/10	115	LBP	350	-	-	AZB1335AXA, AEA1336AXA, AEA1332AXA	AFC1-0013-SAA	30-EMI30ER1	NORMAL	RSIR/CSIR	11.4	513504028	513634076	START - 64A125	PD1	WD1			
30-EMI45ER1	EM40	1/8	115	LBP	485	-	-	AEA1343AXA, AZB1340AXA	AFD1-0017-SAA	30-EMI45ER1	NORMAL	RSIR	15.0	513504403	13634394	N/A	PD1	WD1			
30-EMI55ER1	EM55, EM55NR	1/6	115	LBP	570	-	-	-	-	30-EMI55ER1	NORMAL	RSIR/CSIR	18.7	513504018	13634790	START - 233A125	PD1	WD1			
30-EM65NR1	FF6BK (LBP only)	1/5	115	LBP	635	-	-	AEA1360AXA	AFE1-0023-SAA	30-EM65NR1	NORMAL	RSIR/CSIR	21.0	513504187	13634106	START - 216A125	PD1	WD1			
30-FFC60BK	FF7.5BK	1/5+	115	L/M/HBP	756	2,790	-	AEA3425AXA	ARE25C3-IAA	30-FFC60BK	NORMAL	RSIR	23.2	513506405	13634653	N/A	PD2	WD2			
30-FF8.5BK	FF8.5BKW	1/4	115	L/M/HBP	850	3,080	-	AEA1380AXA	AFF1-0025-SAA	30-FF8.5BK	NORMAL	RSIR/CSIR	33.0	513506783 (RSIR) 513506791 (CSIR)	13554007	START - 513556537	PD2	WD2			
30-FF10BK1	FF10BKW	1/4+	115	L/M/HBP	915	3,240	-	AEA1410AXA, AEA3430AXA	AFG2-0026-SAA, JFC1-0025-SAA	30-FF10BK1	NORMAL	RSIR/CSIR	34.0	513506449 (RSIR) 513516241 (CSIR)	13554420	START - 513556533	PD2	WD2			
30-FF10BX	-	1/4+	115	L/M/HBP	915	3,200	-	AEA2410AXA, AEA4430AXA	ARE27C3-IAA, AFG2-0026-IAA	30-FF10BX	HIGH	CSIR	32.0	513506455	13554439	START - 513556529	PD2	WD2			
30-FF11.5BK1	-	1/3	115	L/M/HBP	1,130	4,000	-	AEA1411AXA	-	30-FF11.5BK1	NORMAL	RSIR/CSIR	40.0	513506260 (RSIR) 513506279 (CSIR)	13554277	START - 513556533	PD2	WD2			
30-FFI12BKW	-	1/3+	115	L/M/HBP	1,350	4,600	-	AEA1413AXA, AEA3440AXA	AFH2-0033-SAA, JFB1-0033-SAA	30-FFI12BKW	NORMAL	RSIR	37.0	513506503	13554277	N/A	PD2	WD2			
30-FFI12BX	-	1/3+	115	L/M/HBP	1,350	5,000	-	AEA440AXA, AEA4448AXA	ARE37C3-IAA, AFH2-0033-IAA, JFB1-0033-IAA	30-FFI12BX	HIGH	CSIR	43.0	513506511	513554412	START - 513556535	PD2	WD2			

Checkpoint Temperatures

	LBP	HBP32	HBP46
Evaporator	-10°F	45°F	45°F
Condenser	130°F	130°F	130°F
Liquid (entering expansion valve)	90°F	90°F	115°F
Ambient	90°F	90°F	95°F
Suction	90°F	90°F	95°F



R22 Compressors

Performance Specifications										Electrical Specifications											
					Capacity BTU/H - ASHRAE			Replacement Guide												Diagrams	
Part #	Old Part #	Nominal HP	Volts	Application	L/MBP	HBP32	HBP46	Tecumseh	Copeland	Part #	Start Torque	Motor Type	LRA	Relay	Overload	Capacitor	Physical	Wiring			
59-NB6152E1	-	1/5+	115	HBP	-	2,640		AEA9415EXA	ARB21C3-IAA, ASE12C4-IAA	59-NB6152E1	HIGH	CSIR	26.5	2283039	2321030	START - 2252017	PD3	WD3			
59-NE6195E1	-	1/2	115	HBP	-	-	4,378	AEA9423EXA	ARE36C3-IAA, ASE19C4-IAA	59-NE6195E1	HIGH	CSIR	29.0	2271102	2324003	START - 2252318	PD4	WD3			
59-NE6210E1	-	1/2	115	HBP	-	-	4,640	AEA9422EXA, AKA9428EXA	ARE43C3-IAA	59-NE6210E1	HIGH	CSIR	29.0	2283001	2321071	START - 2252217	PD4	WD3			
59-NE9213E1	-	3/4	115	M/HBP	-	-	6,543	AKA9442EXA	ARE59C3-CAA	59-NE9213E1	HIGH	CSCR	36.0	1253025	2321081	START - 2252270 RUN - 2253312	PD4	WD4			
59-NE9213E2	-	3/4	208-230	M/HBP	-	-	6,543	AKA9422EXD	ARE59C3-CAV	59-NE9213E2	HIGH	CSCR	25.9	1253026	2321123	START - 2252270 RUN - 2253310	PD4	WD4			
59-T6217E1	-	3/4+	115	HBP	-	-	7,546	AKA5470EXA	ART69C1-IAA, RST40C1-IAA	59-T6217E1	HIGH	CSIR	55.0	2302004	2297018	START - 2252282	PD5	WD3			
59-T6217E2	-	3/4+	208-230	HBP	-	-	7,546	-	ART69C1-IAV, RST40C1-IAV	59-T6217E2	HIGH	CSIR	30.0	2271123	2287121	START - 2252210	PD5	WD3			
59-T6220E1	-	1	115V	HBP	-	-	9,068	AKA5483EXA	ART82C1-CAA	59-T6220E1	HIGH	CSCR	72.0	1253021	2297014	START - 2252275 RUN - 2253315	PD5	WD4			
59-T6220E2	-	1	208-230	HBP	-	-	9,068	AKA5483EXD	ART82C1-CAV	59-T6220E2	HIGH	CSCR	30.0	1253015	2289026	START - 2252268 RUN - 2253310	PD5	WD4			
59-T6222E1	-	1	115	HBP	-	-	10,400	AKA5510EXA	ART97C1-CAA	59-T6222E1	HIGH	CSCR	71.0	1253016	2297010	START - 2252302 RUN 2253313	PD5	WD4			
59-T6222E2	-	1	208-230	HBP	-	-	10,400	AKA5510EXD, AKA5511EXD	ART97C1-CAV	59-T6222E2	HIGH	CSCR	34.0	1253015	2289022	START - 2252268 RUN - 2253310	PD5	WD4			
59-T7223G1	-	1	115	HBP	-	11,000	-	AKA5511EXA	ART97C1-PAA	59-T7223G1	HIGH	CSCR	50.0	1253001	2297010	START - 2252302 RUN - 2253313	PD5	WD5			
59-NJ7225F2	-	1	208-230	HBP	-	-	11,520	AKA5512EXD	-	59-NJ7225F2	HIGH	CSCR	30.0	1253001	2290014	START - 2252266 RUN - 2253312	PD6	WD4			
59-NJ9232E2	-	1 1/4	208-230	HBP	-	-	13,984	-	CR16KQ-PFV, ZR16K5-PFV	59-NJ9232E2	HIGH	CSCR	47.0	1253015	2289034	START - 2252269 RUN - 2253312	PD6	WD4			
59-NJ7231F2	-	1 1/4	208-230	HBP	-	-	14,394	AJB5515EXD	CR16KQ-PFV, ZR16K5-PFV	59-NJ7231F2	HIGH	CSCR	37.0	1253001	2289030	START - 2252266 RUN - 2253314	PD6	WD4			
59-NJ7238E2	-	1 1/2	208-230	HBP	-	-	17,676	AJA5517EXD	CR18KQ-PFV, ZR18K4-PFV	59-NJ7238E2	HIGH	CSCR	51.0	1253001	2297002	START - 2252263 RUN - 2253313	PD6	WD4			
59-NJ7240F2	-	1 1/2	208-230	HBP	-	-	19,366	AJC5519EXD, AWG5519EXN	CR18KQ-PFV, ZR18K4-PFV	59-NJ7240F2	HIGH	CSCR	50.0	1253026	2297021	START - 2252269 RUN - 2253313	PD6	WD4			

Checkpoint Temperatures

	LBP	HBP32	HBP46
Evaporator	-10°F	45°F	45°F
Condenser	130°F	130°F	130°F
Liquid (entering expansion valve)	90°F	90°F	115°F
Ambient	90°F	90°F	95°F
Suction	90°F	90°F	95°F



NE Style

T Style

NJ Style

R134a Compressors

Performance Specifications										Electrical Specifications											
					Capacity BTU/H - ASHRAE			Replacement Guide												Diagrams	
Part #	Old Part #	Nominal HP	Volts	Application	L/MBP	HBP32	HBP46	Tecumseh	Copeland	Part #	Start Torque	Motor Type	LRA	Relay	Overload	Capacitor	Physical	Wiring			
30-EMIS30HHR1	EM30HHR, EMI30HER, EMU30HSC	1/10	115	L/M/HBP	340	1,480	-	AEA1326YXA, AEA1332YXA, AEA3414YXA	-	30-EMIS30HHR1	NORMAL	RSIR/CSIR	16.0	513504263 (RSIR) 513504271 (CSIR)	13554064	START - 513556549	PD1	WD1			
30-EMI45HER	--	1/8	115	LBP	420	-	-	AEA1338YXA	-	30-EMI45HER	NORMAL	RSIR	15.0	513504403	13634394	N/A	PD1	WD2			
30-EM45HHR	EMI40HNR, EM45HNR,	1/8	115	L/M/HBP	420	1,775	-	AEA3417YXA	-	30-EM45HHR	NORMAL	RSIR/CSIR	17.0	513515292	513634475	START - 513556521	PD1	WD1			
30-EMI50HER	-	1/6	115	LBP	510	-	-	-	-	30-EMI50HER	NORMAL	RSIR	18.0	513504314	13634394	N/A	PD1	WD1			
59-NEK6132Z1	NB5132Z, NB6132Z	1/6	115	HBP	-	-	1,762	AEA3417YXA	ARB13C3E-IAA, ARE13C4E-IAA	59-NEK6132Z1	HIGH	CSIR	26.0	2271141	2324115	START - 2252282	PD4	WD3			
59-NEK6144Z1	NB5144Z, NB6144Z	1/6+	115	HBP	-	-	2,183	-	ARB17C3E-IAA, ARE17C4E-IAA	59-NEK6144Z1	HIGH	CSIR	26.0	2271141	2324058	START - 2252282	PD4	WD3			
30-EM65HHR	-	1/5	115	HBP	-	2,600	-	AEA3425YXA	-	30-EM65HHR	NORMAL	RSIR	26.0	513504051	13634001	N/A	PD1	WD6			
30-FF7.5HBK	EMI60HER, FF6HBK, EME60HER, EM65HHC, EM65HNR, EGY70HLP	1/5+	115	L/M/HBP	630	2,760	-	AEA1360YXA, AEA3425YXA	ARE25C3E-IAA	30-FF7.5HBK	NORMAL	RSIR	25.0	513516134	513506070	N/A	PD2	WD2			
59-NEK6160Z1	NE5160Z1, NE6160Z1	1/4	115	HBP	-	-	2,884	-	ARE25C4E-IAA, ARE25C3E-IAA	59-NEK6160Z1	HIGH	CSIR	28.5	2271126	2324063	START - 2252318	PD4	WD3			
30-FF8.5HBK	EMI70HER, EMI70HNR	1/4	115	L/M/HBP	740	3,135	-	AEA1370YXA, AEA3430YXA	ARE29C4E-IAA, ARE27C3E-IAA	30-FF8.5HBK	NORMAL	RSIR/CSIR	34.5	513506244 (RSIR) 513506252 (CSIR)	513554000	START - 513556529	PD2	WD2			
59-NE2121Z1	-	1/4	115	LBP	950	-	-	AEA1390YXA	AFE07C3E-IAA	59-NE2121Z1	HIGH	CSIR	29.0	2283001	2321018	START - 2252230	PD4	WD3			
59-NEK6170Z1	NE5170Z1, NE6170Z1	1/4	115	HBP	-	-	3,340	AEA4430YXA	ARE29C4E-IAA, ARE27C3E-IAA, ARE29C4E-IAA	59-NEK6170Z1	HIGH	CSIR	28.5	2271126	2324055	START - 2252318	PD4	WD3			
30-FF10HBK1	-	1/4+	115	L/M/HBP	840	3,530	-	AEA1380YXA	-	30-FF10HBK1	NORMAL	RSIR/CSIR	40.0	513506242 (RSIR) 513506245 (CSIR)	13554447	START - 513556533	PD2	WD2			
30-FF10HBX	-	1/4+	115	L/M/HBP	840	3,650	-	-	ARE37C3E-IAA	30-FF10HBX	HIGH	CSIR	35.0	513506009	13554609	START - 513556529	PD2	WD2			

Checkpoint Temperatures

	LBP	HBP32	HBP46
Evaporator	-10°F	45°F	45°F
Condenser	130°F	130°F	130°F
Liquid (entering expansion valve)	90°F	90°F	115°F
Ambient	90°F	90°F	95°F
Suction	90°F	90°F	95°F



R134a Compressors

Performance Specifications										Electrical Specifications									
Part #	Old Part #	Nominal HP	Volts	Application	Capacity BTU/H - ASHRAE			Replacement Guide		Part #	Start Torque	Motor Type	LRA	Relay	Overload	Capacitor	Diagrams		
					L/MBP	HBP32	HBP46	Tecumseh	Copeland								Physical	Wiring	
30-FFI10HBX	-	1/3	115	L/M/HBP	1,065	4,400	-	AEA4440YXA, AEA3440YXA	-	30-FFI10HBX	HIGH	CSIR	35.0	513506009	13554609	START - 513556529	PD2	WD2	
59-NE2130Z1	-	1/3	115	LBP	1,250	-	-	-	AFE10C3E-IAA	59-NE2130Z1	HIGH	CSIR	38.0	2271016	2324059	START - 2252282	PD4	WD3	
59-NEK6187Z1	-	1/3+	115	HBP	-	-	3,830	AEA3440YXA, AEA4440YXA	ARE34C4E-IAA	59-NEK6187Z1	HIGH	CSIR	37.0	2271011	2324093	START - 2252320	PD4	WD3	
59-NEK6210Z1	NE5187Z1, NE6187Z1	1/3+	115	HBP	-	-	4,524	-	ARE40C4E-IAA, ARE37C3E-IAA	59-NEK6210Z1	HIGH	CSIR	37.0	2283012	2321020	START - 2252289	PD4	WD3	
30-FFI12HBX	FFU130HAX	1/3+	115	L/M/HBP	1,190	5,300	-	AEA2410YXA, AEA4448YXA	ARE40C4E-IAA, ARE37C3E-IAA	30-FFI12HBX	HIGH	CSIR	43.0	513506066	13554099	START - 513556535	PD2	WD2	
59-NE2134Z1	T2134Z1	1/2	115	LBP	1,450	-	-	AEA2413YXA	AFE12C3E-IAA, AFT12C1E-IAA	59-NE2134Z1	HIGH	CSIR	33.0	2271011	2324063	START - 2252320	PD4	WD3	
59-NEK2140Z1	-	1/2	115	LBP	1,700	-	-	AJA2419YXA	AFE12C4E-IAA	59-NEK2140Z1	HIGH	CSIR	40.0	2271053	2324092	START - 2252324	PD4	WD3	
59-NEK6212Z1	NE6210Z1	1/2	115	HBP	-	-	5,178	AEA4448YXA	ARE46C4E-IAA, ARE41C3E-IAA	59-NEK6212Z1	HIGH	CSIR	40.0	2271016	2324108	START - 2252324	PD4	WD3	
59-NEK6214Z1	-	3/4-	115	HBP	-	-	5,960	AKA4460YXA	ART51C1E-IAA, ART51C4E-IAA	59-NEK6214Z1	HIGH	CSCR	48.0	1253050	2321125	START - 2252331 RUN - 2253315	PD4	WD4	
59-NT6215Z2	T6213Z2, T6215Z2	1/2+	208-230	HBP	-	-	6,400	AKA4460YXD	ART51CE-IAV	59-NT6215Z2	HIGH	CSIR	20.8	2271051	2324075	START - 2252365	PD7	WD3	
59-NT6215Z1	T6213Z1, T6215Z1	1/2+	115	HBP	-	-	6,626	-	ART62C1E-IAA, RRT62C1E-IAA	59-NT6215Z1	HIGH	CSIR	45.0	2271016	2324074	START - 2252356	PD7	WD3	
59-NT6217Z1	T6217Z1	3/4+	115	HBP	-	-	7,460	AKA4476YXA	ART64C1E-IAA, RRT64C1E-IAA	59-NT6217Z1	HIGH	CSIR/CSCR	48.8	1253016	2321114	START - 2252331 RUN - 2253315	PD7	WD4	
59-NT6217Z2	T6217Z2	3/4+	208-230	HBP	-	-	7,579	AKA4476YXD	ART64C1E-IAV, RRT64C1E-IAV	59-NT6217Z2	HIGH	CSIR	31.0	2271137	2324103	START - 2252365	PD7	WD3	
59-NT6220Z2	T6220Z2	1	208-230	HBP	-	-	8,351	-	-	59-NT6220Z2	HIGH	CSIR	32.0	2271041	2324085	START - 2252364	PD7	WD3	
59-NT6220Z1	T6220Z1	1	115	HBP	-	-	8,414	-	-	59-NT6220Z1	HIGH	CSIR/CSCR	50.0	1253050	2297024	START - 2252273 RUN - 2253315	PD7	WD4	
59-NJ6220Z1	J6220Z1	1	115	HBP	-	-	10,169	AJA4492YXA	ARJ84C1E-IAA, ARJ84C2E-IAA	59-NJ6220Z1	HIGH	CSIR	72.0	1253017	2297010	START - 2252300	PD6	WD7	
59-NJ6220Z2	J6220Z2	1	208-230	HBP	-	-	10,169	AJA4492YXD	ARJ84C1E-IAV, ARJ84C2E-IAV	59-NJ6220Z2	HIGH	CSIR	42.0	2302003	2289031	START - 2252265	PD6	WD4	
59-NJ6226Z2	-	1 1/4	208-230	HBP	-	-	11,130	AJA4512YXD	ARJ11K1E-CAV, ARJ11K2E-CAV	59-NJ6226Z2	HIGH	CSCR	40.0	1253012	2291053	START - 2252270 RUN - 2253311	PD6	WD4	

Checkpoint Temperatures

	LBP	HBP32	HBP46
Evaporator	-10°F	45°F	45°F
Condenser	130°F	130°F	130°F
Liquid (entering expansion valve)	90°F	90°F	115°F
Ambient	90°F	90°F	95°F
Suction	90°F	90°F	95°F



R404A Compressors

Performance Specifications										Electrical Specifications									
					Capacity BTU/H - ASHRAE			Replacement Guide										Diagrams	
Part #	Old Part #	Nominal HP	Volts	Application	L/MBP	HBP32	HBP46	Tecumseh	Copeland	Part #	Start Torque	Motor Type	LRA	Relay	Overload	Capacitor	Physical	Wiring	
59-NEK2121GK1	-	1/3	115	LBP	1,212	-	-	AEA2380ZXA	AFE08C4E-IAA, AFE09C4E-IAA, AFE11C3E-IAA	59-NEK2121GK1	HIGH	CSIR	26.5	2283055	2321083	START - 2252217	PD4	WD3	
59-NE2125GK1	-	1/3	115	LBP	1,242	-	-	-	-	59-NE2125GK1	HIGH	CSIR	26.5	2283055	2321083	START - 2252217	PD4	WD3	
59-NEK2125GK1	-	1/3+	115	LBP	1,458	-	-	AEA2411ZXA	AFE11C4E-IAA, AFE11C3E-IAA	59-NEK2125GK1	HIGH	CSIR	26.5	2271126	2324055	START - 2252318	PD4	WD3	
59-NEK6181GK1	-	1/3+	115	MBP	-	-	4,389	AEA9422ZXA	ASE20C4E-IAA	59-NEK6181GK1	HIGH	CSIR	26.5	2271126	2324055	START - 2252282	PD4	WD3	
59-NEK6181GK2	-	1/3+	208-230	MBP	-	-	4,400	-	-	59-NEK6181GK2	HIGH	CSIR	17.5	2271110	2324009	START - 2252325	PD4	WD3	
59-NEK2134GK2	NE2134GK2	1/2	208-230	LBP	1,858	-	-	AJA2419ZXD	AFE13C4E-IAV, AFE13C3E-IAV	59-NEK2134GK2	HIGH	CSIR	20.0	2271121	2324009	START - 2252325	PD4	WD3	
59-NEK2134GK1	NE2134GK1	1/2	115	LBP	1,948	-	-	AJA2419ZXA	AFE13C4E-IAA, AFE13C3E-IAA	59-NEK2134GK1	HIGH	CSIR	37.5	2283012	2321086	START - 2252335	PD4	WD3	
59-NEK6210GK2	NE6210GK2	1/2	208-230	MBP	-	-	5,254	-	ASE26C4E-CAV, ASE24C3E-IAV	59-NEK6210GK2	HIGH	CSIR	16.8	2271127	2324105	START - 2252372	PD4	WD3	
59-NEK6210GK1	NE6210GK1	1/2	115	MBP	-	-	5,355	-	ASE26C4E-CAA, ASE24C3E-IAA	59-NEK6210GK1	HIGH	CSIR	38.0	2271128	2324025	START - 2252320	PD4	WD3	
59-T2155GK1	-	1/2+	115	LBP	2,330	-	-	-	AFT18C1E-IAA	59-T2155GK1	HIGH	CSIR	48.8	2283028	2285177T	START - 2252230	PD7	WD4	
59-NEK2150GK2	-	1/2+	208-230	LBP	2,361	-	-	AJA2425ZXD	AFE17C4E-IAV	59-NEK2150GK2	HIGH	CSIR	22.0	2283060	2321105	START - 2252220	PD4	WD3	
59-NEK2150GK1	-	1/2+	115	LBP	2,493	-	-	AJA2425ZXA	AFE17C4E-IAA	59-NEK2150GK1	HIGH	CSIR	41.5	2271016	2324069	START - 2252320	PD4	WD3	
59-NEK6213GK1	NE9213GK1	1/2+	115	M/HBP	-	-	6,660	-	-	59-NEK6213GK1	HIGH	CSIR	57.0	2271016	2324083	START - 2252320	PD4	WD3	
59-NEK6213GK2	NE9213GK2	1/2+	208-230	M/HBP	-	-	6,946	-	-	59-NEK6213GK2	HIGH	CSIR	30.0	2271128	2324063	START - 2252325	PD4	WD3	
59-NT2168GKV1	T2168GK1, NT2168GK1	3/4	115	LBP	2,628	-	-	AJA2431ZXA	AFT22C1E-IAA, RFT22C1E-IAA, AFJ23C1E-IAA	59-NT2168GKV1	HIGH	CSCR	54.5	1253050	2291048	START 2252273 RUN 2253315	PD7	WD4	
59-T2168GK2	-	3/4	208-230	LBP	3,008	-	-	AJA2431ZXD	RFT22C1E-IAV	59-T2168GK2	HIGH	CSCR	18.0	1253024	INTERNAL	START 2252270 RUN 2253310	PD7	WD4	
59-NT6217GKV1	NEK6213GK1, NE9213GK1, NT6217GK1, T6217GK1	3/4	115	MBP	-	-	7,380	AKA9438ZXA	ASE35C4E-IAA, ASE32C3E-CAA, AST40C1E-IAA, RST40C1E-IAA	59-NT6217GKV1	HIGH	CSIR	50.0	2271046	2324004	START - 2252377	PD7	WD3	
59-NT6217GKV2	NEK6213GK2, NE9213GK2, NT6217GK2, T6217GK2	3/4	208-230	MBP	-	-	7,332	AKA9438ZXD	ASE35C4E-IAV, ASE32C3E-CAV, AST40C1E-IAV, RST40C1E-IAV	59-NT6217GKV2	HIGH	CSIR	27.0	2283055	2321128	START - 2252327	PD7	WD3	

Checkpoint Temperatures

	LBP	HBP32	HBP46
Evaporator	-10°F	45°F	45°F
Condenser	130°F	130°F	130°F
Liquid (entering expansion valve)	90°F	90°F	115°F
Ambient	90°F	90°F	95°F
Suction	90°F	90°F	95°F



NE/NEK Style

T Style

NT Style

R404A Compressors

Performance Specifications										Electrical Specifications											
					Capacity BTU/H - ASHRAE			Replacement Guide												Diagrams	
Part #	Old Part #	Nominal HP	Volts	Application	L/MBP	HBP32	HBP46	Tecumseh	Copeland	Part #	Start Torque	Motor Type	LRA	Relay	Overload	Capacitor	Physical	Wiring			
59-T2180GK2	-	1	208-230	LBP	3,872	-	-	AWA2440ZXD	AFT29C1E-CFV, RFT29C1E-IAV	59-T2180GK2	HIGH	CSCR	33.0	1253019	INTERNAL	START 2252269 RUN 2253310	PD7	WD4			
59-NT2180GKV1	T2178GK1, T2180GK1	1	115	LBP	3,892	-	-	AJB2433ZXA	AFT26C1E-CFA, RFT26C1E-CAA, AFT29C1E-CFA	59-NT2180GKV1	HIGH	CSCR	66.0	1253050	2291062	START - 2252273 RUN - 2253315	PD7	WD4			
59-NT2180GKV2	T2178GK2	1	208-230	LBP	3,892	-	-	AWA2440ZXD	AFT29C1E-CFV, RFT29C1E-IAV	59-NT2180GKV2	HIGH	CSCR	40.0	1253010	2321091	START - 2252274 RUN - 2253316	PD7	WD4			
59-NT6220GKV1	-	1	115	M/HBP	-	-	8,464	-	AST45C1E-IAA, RST45C1E-CAA	59-NT6220GKV1	HIGH	CSCR	54.5	1253050	2291055	START - 2252331 RUN - 2253315	PD7	WD4			
59-NT6220GKV2	NT6220GK2	1	208-230	M/HBP	-	-	8,464	-	AST45C1E-CAV	59-NT6220GKV2	HIGH	CSCR	26.5	1253015	2321091	START - 2252270 RUN - 2253310	PD7	WD4			
59-NT6220GK1	-	1	115	M/HBP	-	-	8,464	-	-	59-NT6220GK1	HIGH	CSCR	54.5	1253053	2335008	START - 2252317 RUN - 2253315	PD7	WD4			
59-NT6222GKV2	T6220GK2, NT6222GK2	1	208-230	M/HBP	-	-	9,992	AJA7494ZXD	AST54C1E-CAV, RST55C1E-CAV	59-NT6222GKV2	HIGH	CSCR	33.7	1253015	2321018	START - 2252269 RUN - 2253310	PD7	WD4			
59-NT6222GKV1	T6220GK1, NT6222GK1	1	115	M/HBP	-	-	10,376	AJA7494ZXA	AST54C1E-CAA, RST55C1E-CAA	59-NT6222GKV1	HIGH	CSCR	70.0	1253050	2291061	START - 2252331 RUN - 2253315	PD7	WD4			
59-NT6224GKV2	T6222GK2	1	208-230	M/HBP	-	-	11,984	-	RST61C1E-CAV	59-NT6224GKV2	HIGH	CSCR	36.0	1253019	2321132	START - 2252270 RUN - 2253311	PD7	WD4			
59-NT6224GKV1	T6222GK1	1	115	M/HBP	-	-	12,326	AWA7512ZXD	RST61C1E-CFA, AST54C1E-CAA	59-NT6224GKV1	HIGH	CSCR	77.0	1253028	INTERNAL	START - 2252343 RUN - 2253307	PD7	WD4			
59-NT6226GKV2	NT6226GK2	1	208-230	M/HBP	-	-	12,590	-	RST64C1E-IAV, RST64C1E-CAV	59-NT6226GKV2	HIGH	CSCR	36.0	1253026	2291048	START - 2252270 RUN - 2253312	PD7	WD4			
59-NJ9226GK2	-	1	208-230	M/HBP	-	-	12,653	-	-	59-NJ9226GK2	HIGH	CSCR	34.0	1253015	2289016	START 2252069 RUN - 2253064	PD6	WD4			
59-NT6226GKV1	NT6226GK1	1	115	M/HBP	-	-	12,922	-	RST64C1E-CFA	59-NT6226GKV1	HIGH	CSCR	77.0	1253028	INTERNAL	START - 2252343 RUN - 2253307	PD7	WD4			

Checkpoint Temperatures

	LBP	HBP32	HBP46
Evaporator	-10°F	45°F	45°F
Condenser	130°F	130°F	130°F
Liquid (entering expansion valve)	90°F	90°F	115°F
Ambient	90°F	90°F	95°F
Suction	90°F	90°F	95°F



T Style

NT Style

NJ Style

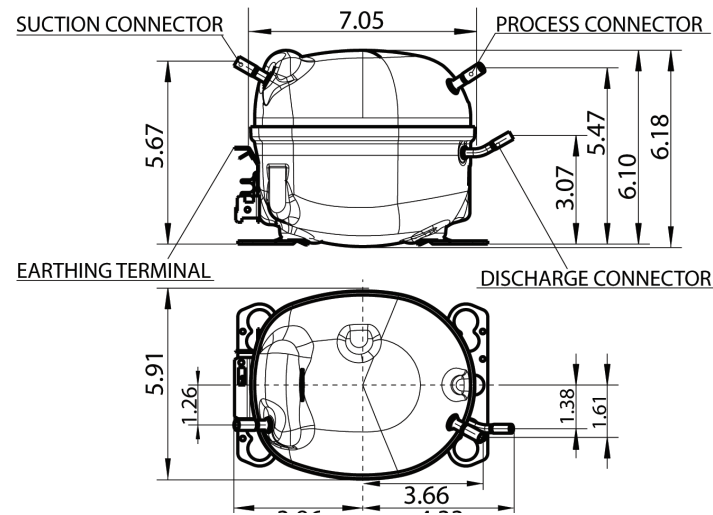
R404A Compressors

Performance Specifications										Electrical Specifications									
					Capacity BTU/H - ASHRAE			Replacement Guide										Diagrams	
Part #	Old Part #	Nominal HP	Volts	Application	L/MBP	HBP32	HBP46	Tecumseh	Copeland	Part #	Start Torque	Motor Type	LRA	Relay	Overload	Capacitor	Physical	Wiring	
59-NT2192GKV1	-	1 1/4	115	LBP	3,219	-	-	-	-	59-NT2192GKV1	HIGH	CSCR	56.0	1253001	2295004	START - 2252273 RUN - 2253315	PD7	WD4	
59-NT2192GKV2	-	1 1/4	208-230	LBP	3,246	-	-	-	-	59-NT2192GKV2	HIGH	CSCR	40.0	1253026	2321091	START - 2252269 RUN - 2253310	PD7	WD4	
59-NJ2192GK1	-	1 1/4	115	LBP	4,500	-	-	-	RFT32C1E-IAA	59-NJ2192GK1	HIGH	CSCR	98.0	1253001	INTERNAL	START - 2252317 RUN - 2253312	PD6	WD4	
59-NJ2192GK2	-	1 1/4	208-230	LBP	4,500	-	-	AWA2450ZXD, AJB2444ZXD	AFJ31C1E-CFV, AFJ31C2E-CFV, RFT32C1E-IAV	59-NJ2192GK2	HIGH	CSCR	40.0	1253010	INTERNAL	START - 2252269 RUN - 2253312	PD6	WD4	
59-NTU6232GKV2	-	1 1/4	208-230	MBP	-	-	13,760	-	RST70C1E-PFV	59-NTU6232GKV2	HIGH	CSCR	46.0	1253015	INTERNAL	START - 2252271 RUN - 2253313	PD8	WD4	
59-NTU6234GKV2	-	1 1/4	208-230	MBP	-	-	15,909	AWA7515ZXD	RST80C1E-PFV	59-NTU6234GKV2	HIGH	CSCR	46.0	1253015	INTERNAL	START - 2252271 RUN - 2253314	PD8	WD4	
59-NJ9232GK2	-	1 1/4	208-230	MBP	-	-	16,104	-	-	59-NJ9232GK2	HIGH	CSCR	40.0	1253015	2289016	START - 2252069 RUN - 2253064	PD6	WD4	
59-NJ2212GK1	-	1 1/2	115	LBP	5,444	-	-	-	-	59-NJ2212GK1	HIGH	CSCR	90.0	1253001	INTERNAL	START - 2252317 RUN - 2253312	PD6	WD4	
59-NT2212GKV1	-	1 1/2	115	LBP	5,495	-	-	-	RFT42C1E-PFA	59-NT2212GKV1	HIGH	CSCR	93.0	1253065	INTERNAL	START - 2252374 RUN - 2253321	PD8	WD4	
59-NT2212GKV2	-	1 1/2	208-230	LBP	5,710	-	-	AHA2465ZXB, AWA2460ZXD	RFT42C1E-PFV, AFJ37C1E-CFV, AFJ37C2E-CFV	59-NT2212GKV2	HIGH	CSCR	45.0	1253019	INTERNAL	START - 2252274 RUN - 2253313	PD8	WD4	
59-NJ2212GK2	-	1 1/2	208-230	LBP	5,911	-	-	-	-	59-NJ2212GK2	HIGH	CSCR	45.0	1253001	INTERNAL	START 2252269 RUN 2253312	PD6	WD4	
59-NTU6238GKV2	NJ9238GK2	1 1/2	208-230	MBP	-	-	17,590	-	RST97C1E-PFV	59-NTU6238GKV2	HIGH	CSCR	51.0	1253015	INTERNAL	START - 2252271 RUN - 2253314	PD8	WD4	
59-NTU6240GKV2	-	1 1/2	208-230	MBP	-	-	18,318	-	RST10K1E-PFV	59-NTU6240GKV2	HIGH	CSCR	51.0	1253015	INTERNAL	START - 2252271 RUN - 2253314	PD8	WD4	

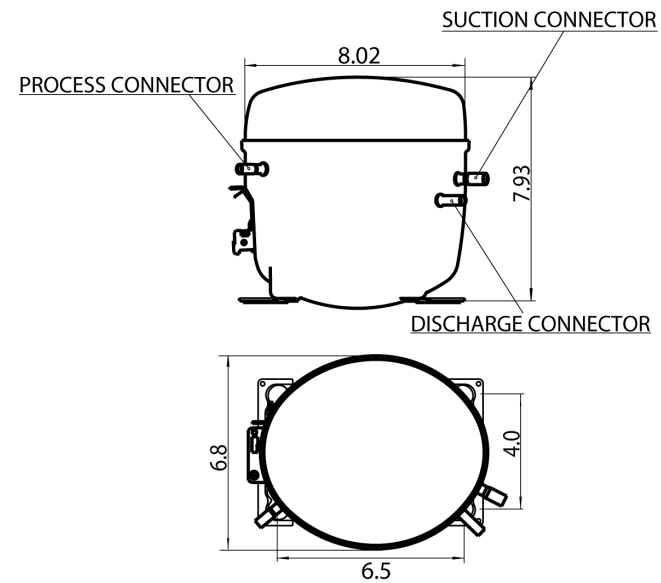
Checkpoint Temperatures

	LBP	HBP32	HBP46
Evaporator	-10°F	45°F	45°F
Condenser	130°F	130°F	130°F
Liquid (entering expansion valve)	90°F	90°F	115°F
Ambient	90°F	90°F	95°F
Suction	90°F	90°F	95°F

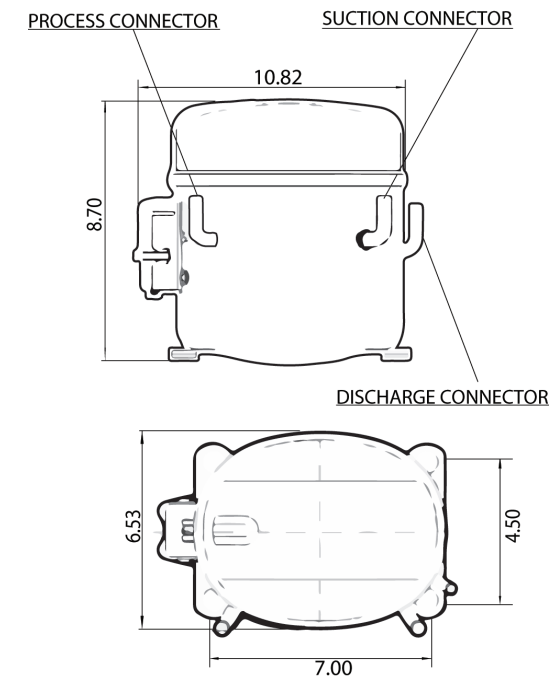




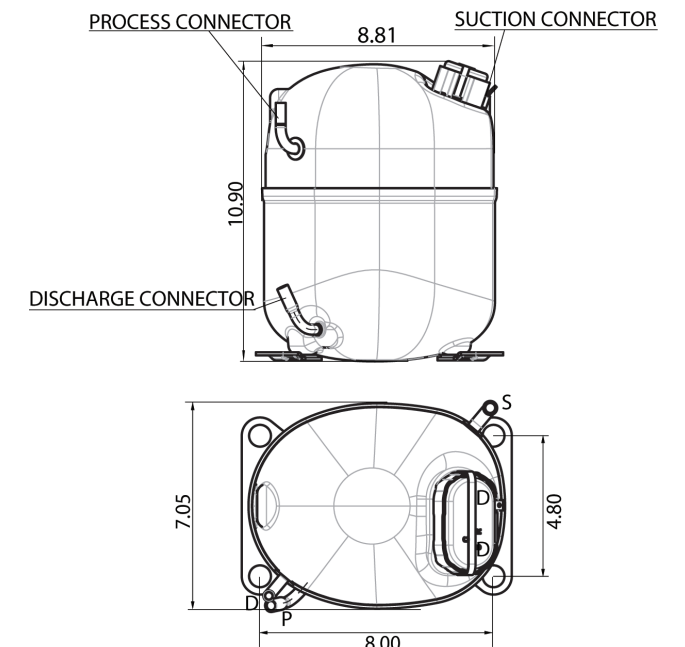
PD1



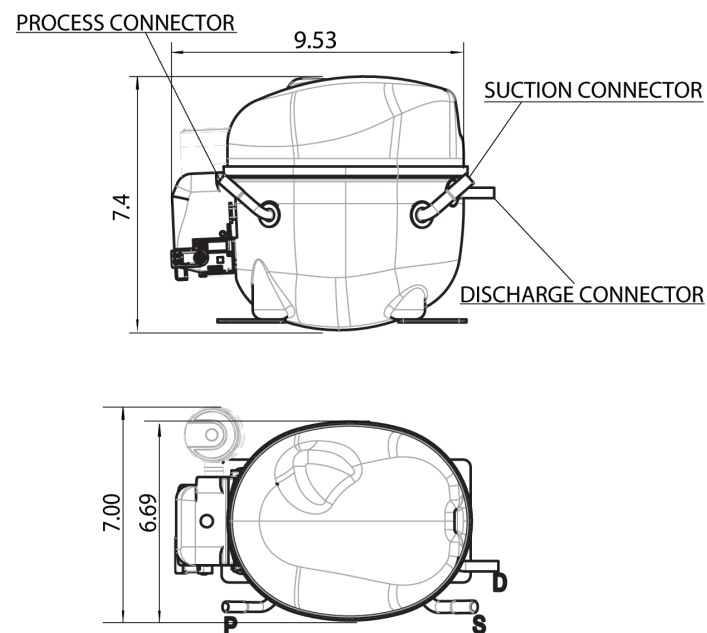
PD2



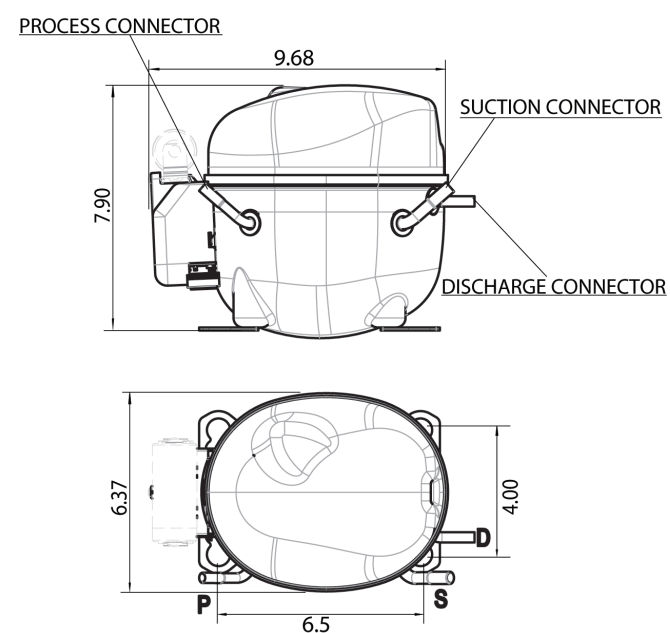
PD5



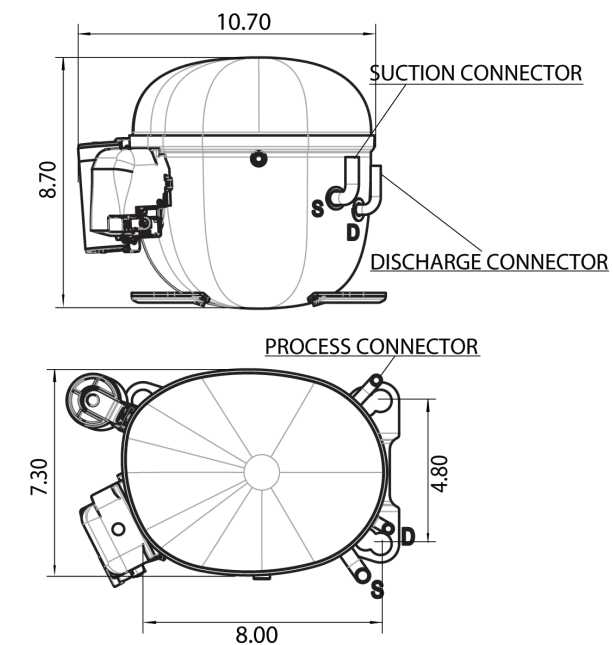
PD6



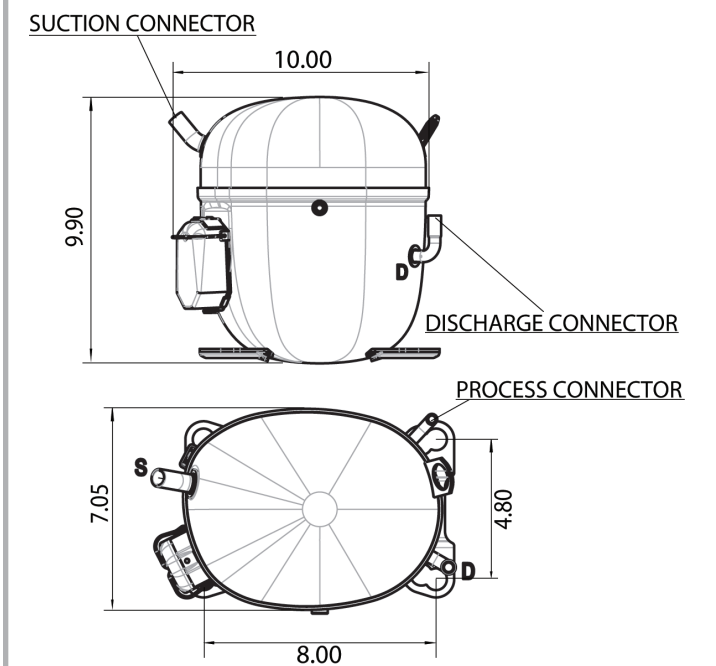
PD3



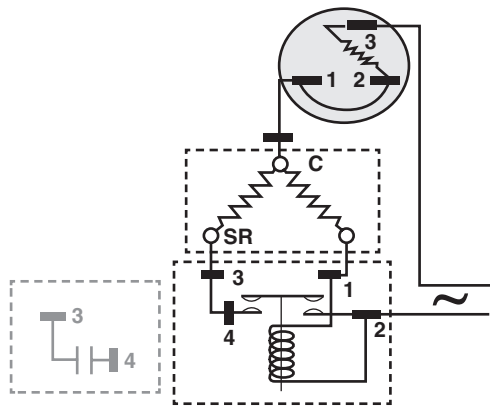
PD4



PD7



PD8

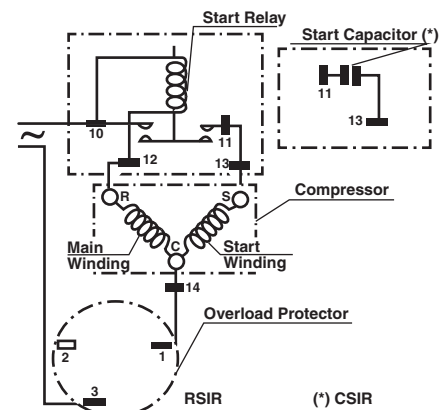


Compressor Terminals

C = Common
R = Run
S = Start

Electrical components are supplied unassembled.
Use of components other than specified will void warranty.

WD1

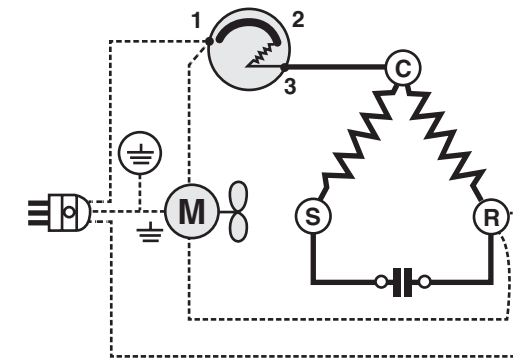


Compressor Terminals

C = Common
R = Run
S = Start

Electrical components are supplied unassembled.
Use of components other than specified will void warranty.

WD2



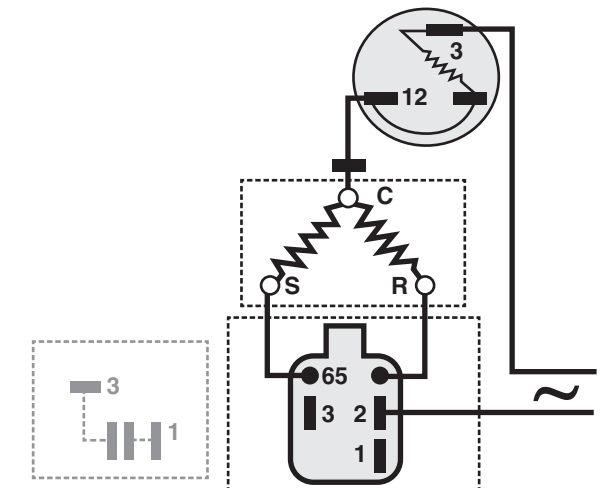
To obtain CSR add relay and start capacitor to PSC version by connecting the dash line

Compressor Terminals

C = Common
R = Run
S = Start

Electrical components are supplied unassembled.
Use of components other than specified will void warranty.

WD5

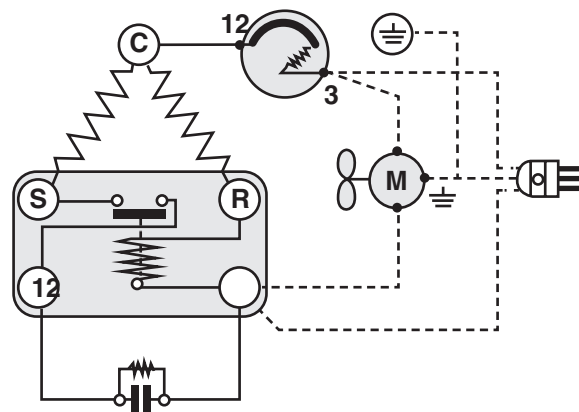


Compressor Terminals

C = Common
R = Run
S = Start

Electrical components are supplied unassembled.
Use of components other than specified will void warranty.

WD6

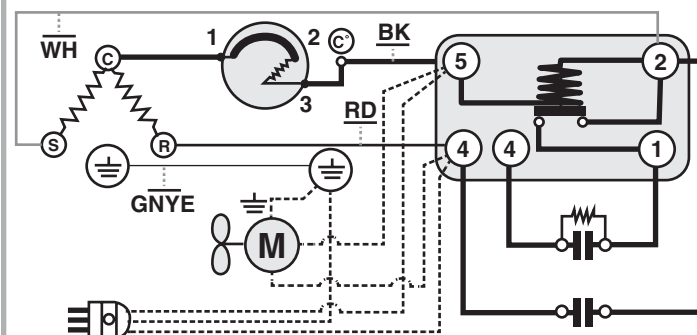


Compressor Terminals

C = Common
R = Run
S = Start

Electrical components are supplied unassembled.
Use of components other than specified will void warranty.

WD3

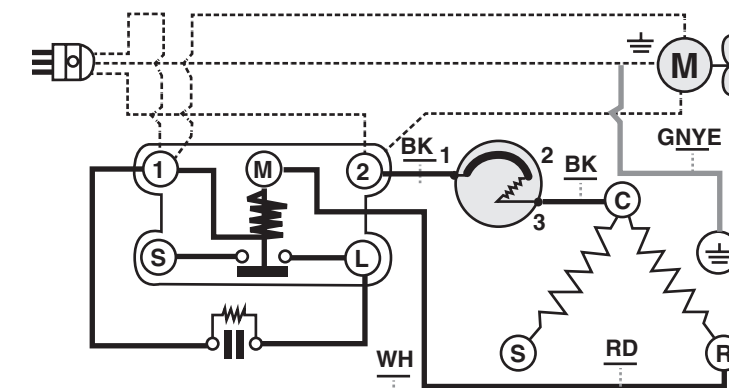


Compressor Terminals

C = Common
R = Run
S = Start

Electrical components are supplied unassembled.
Use of components other than specified will void warranty.

WD4



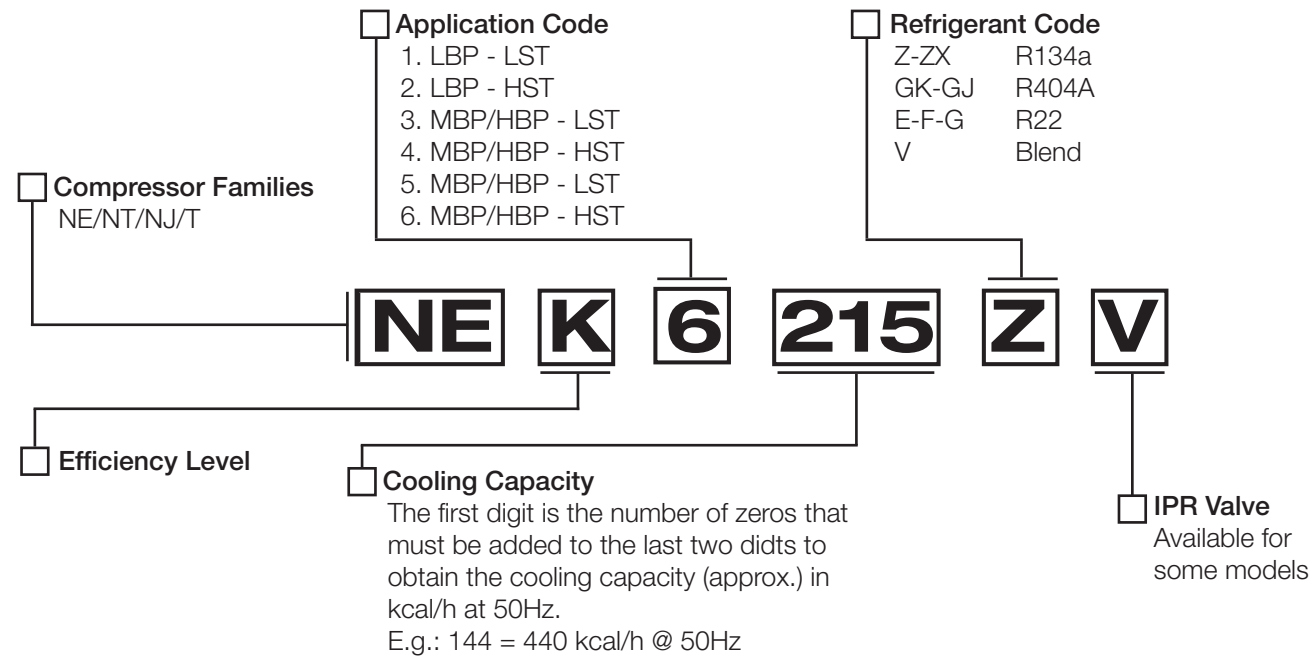
Compressor Terminals

C = Common
R = Run
S = Start

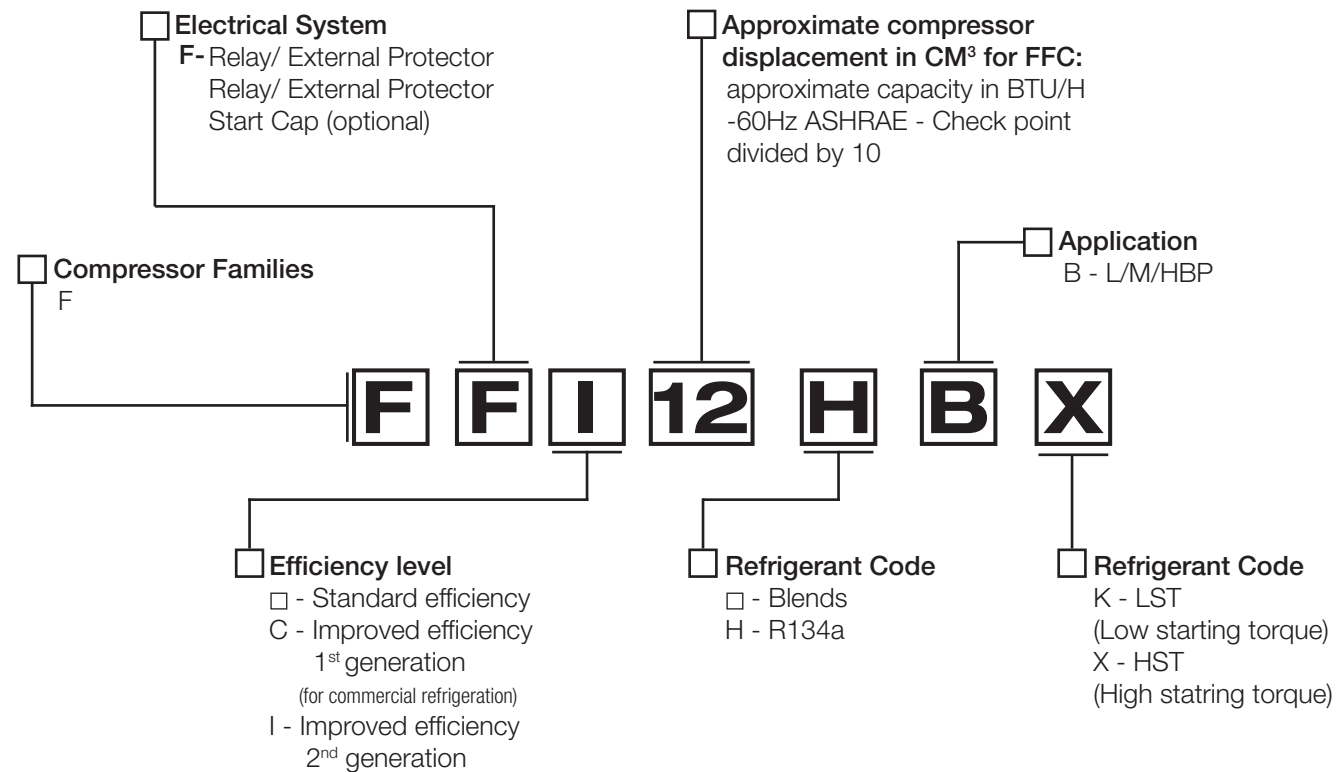
Electrical components are supplied unassembled.
Use of components other than specified will void warranty.

WD7

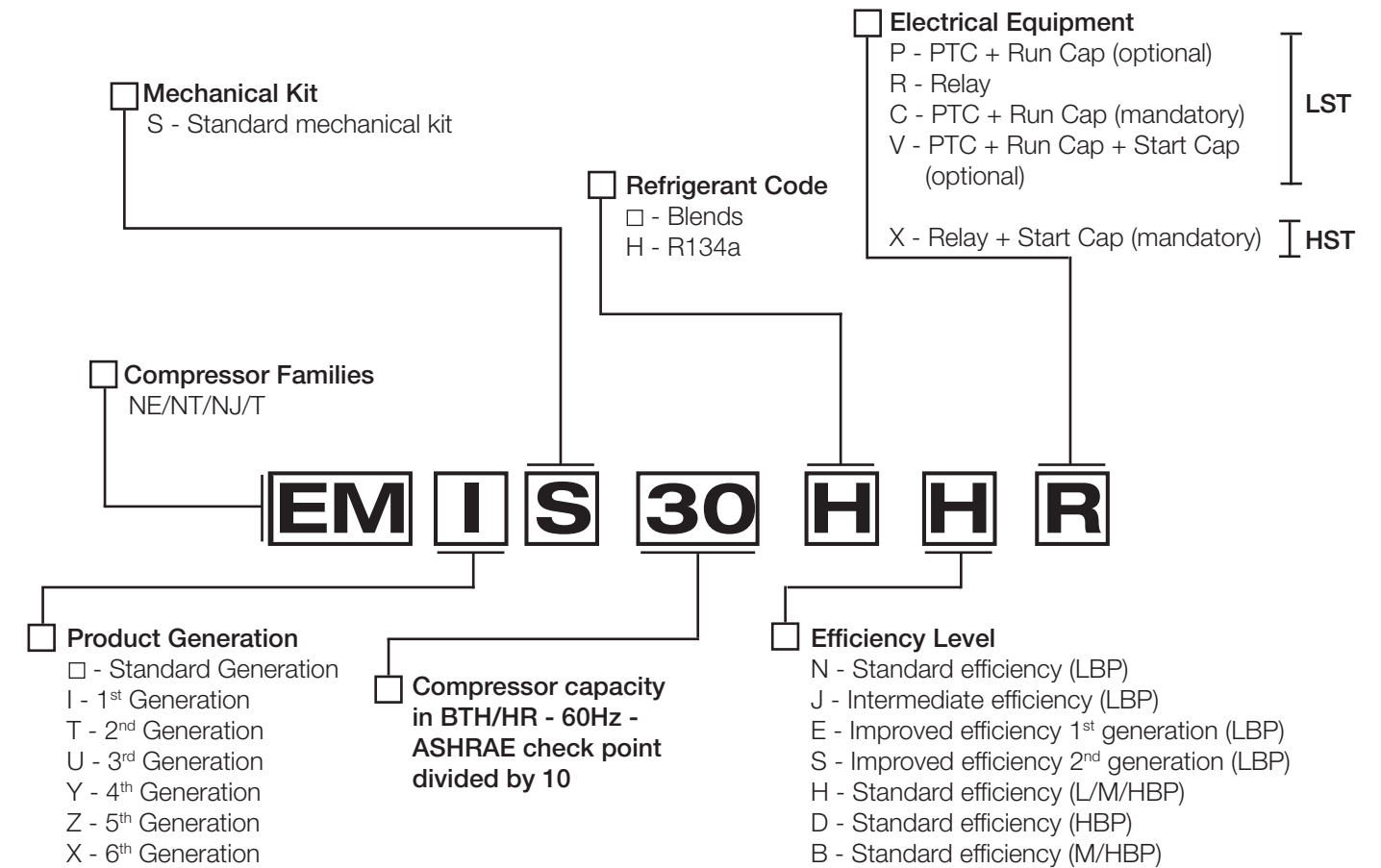
Nomenclature



NE/NEK/NT/T/NJ Styles



F Style



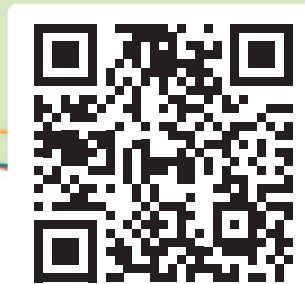
EM Style

embraco POWER IN.
CHANGE ON.

Embraco's new trouble shooting app.
THE SOLUTION IN YOUR HANDS.



Scan to download now!



www.embraco.com/apps/troubleshooting

>> Designed for refrigeration professionals.



ALTEMP

www.alltemp.ca